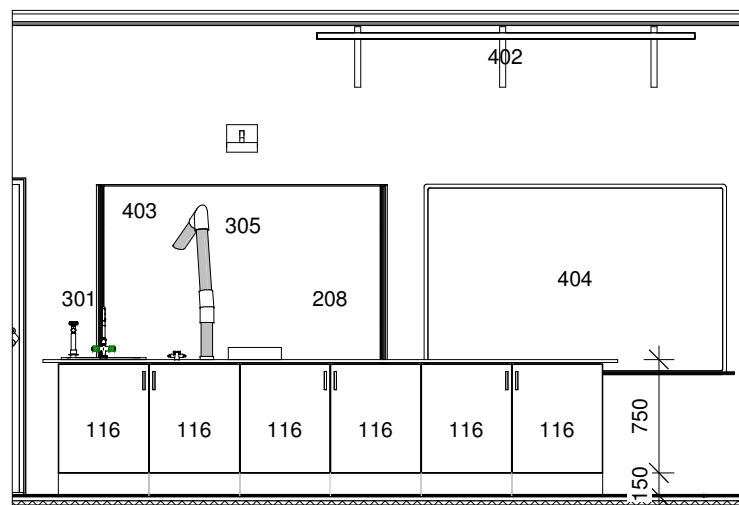
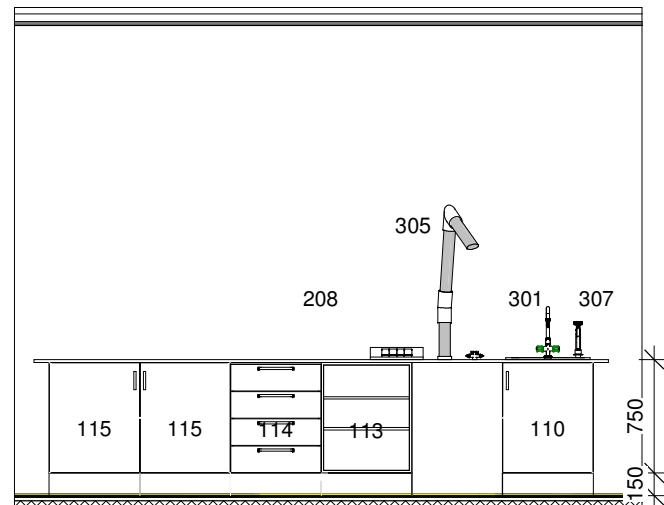


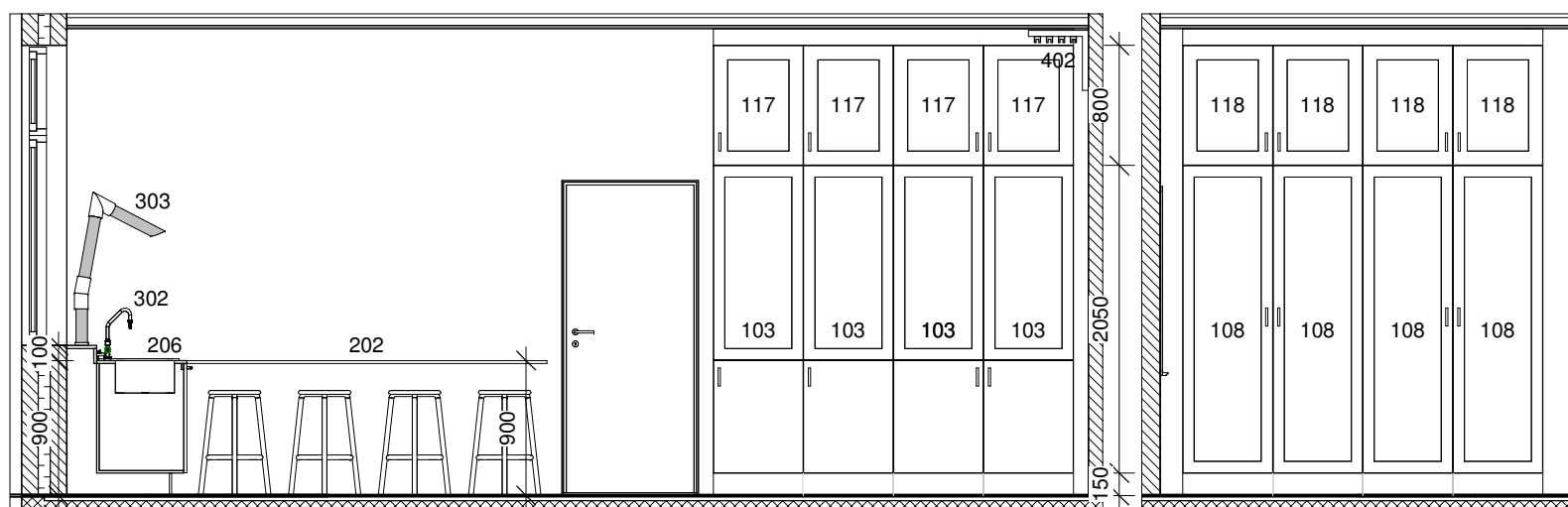
S06 - A  
1 : 50



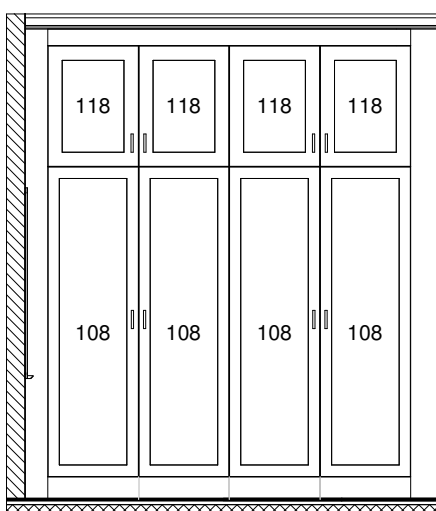
S06 - B  
1 : 50



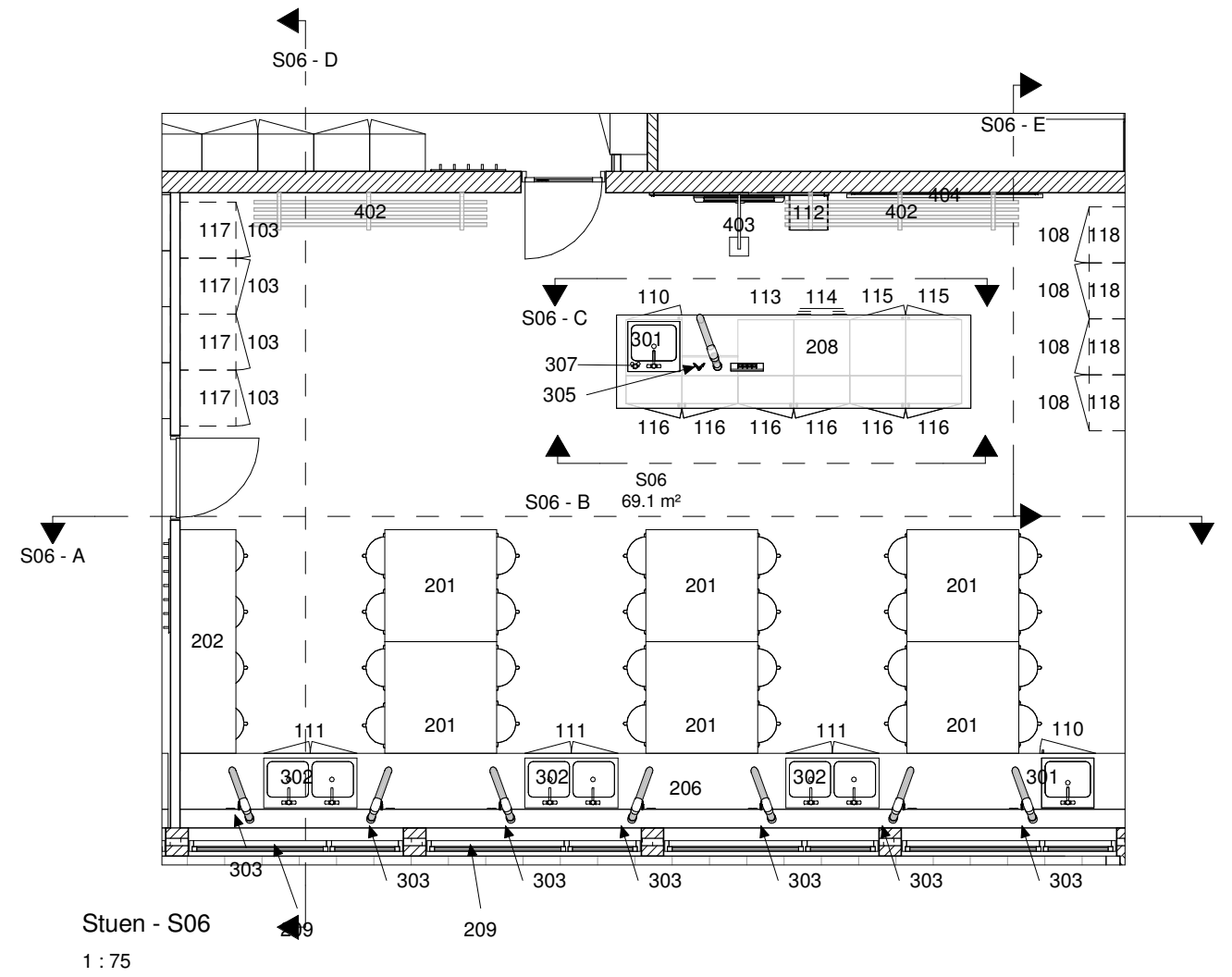
S06 - C  
1 : 50



S06 - D  
1 : 50



S06 - E  
1 : 50



Stuen - S06  
1 : 75

Positionsnumre henviser til inventarliste for gældende projekt.

Rev.

### 30021 - Tibberupskolen, faglokaler

Emne	<b>Rumtegning S06</b>		Tegn. nr.	<b>A-02-04-05</b>
Fase	<b>Udbudsprojekt</b>	Bygherre	Helsingør Kommune Center for Økonomi og Ejendomme Sct. Anna Gade 5 A 3000 Helsingør	Mål Udsendt Revideret
Tegner	<b>MDO</b>	Arkitekt	LeanDesign Aps Sophie Brahes Gade 1A 3000 Helsingør	Adresse Matrikelnr. Ejerlav
Kontrol	<b>JWR</b>	Ingeniør	LeanDesign Aps Sophie Brahes Gade 1A 3000 Helsingør	Idrætsvej 19, 3060 Espergårde 26ee Mørdrup by, Mørdrup