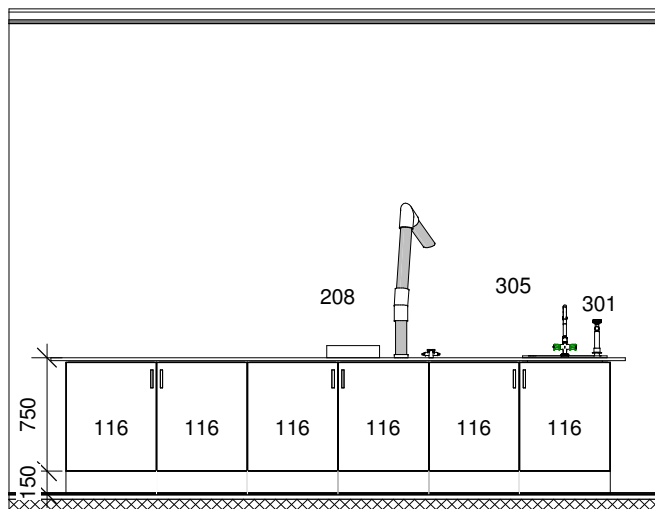
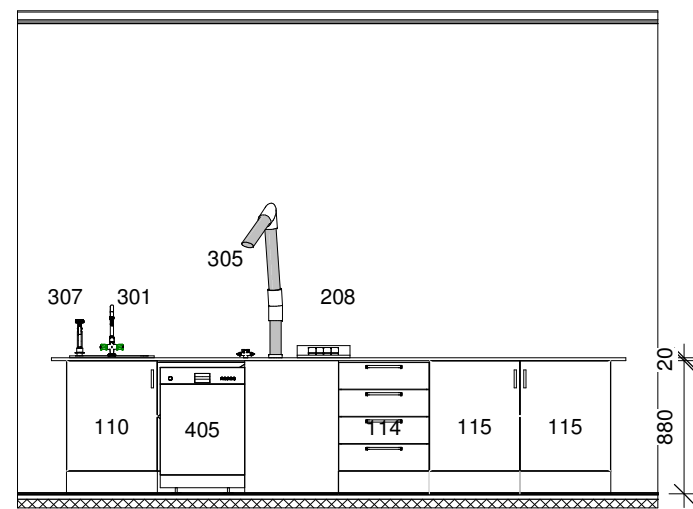


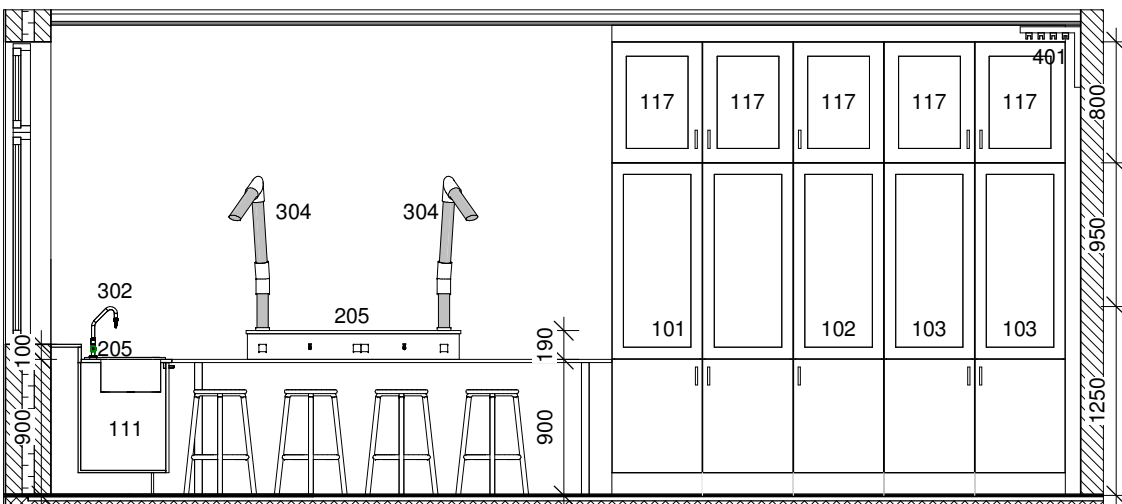
S04 - A
1 : 50



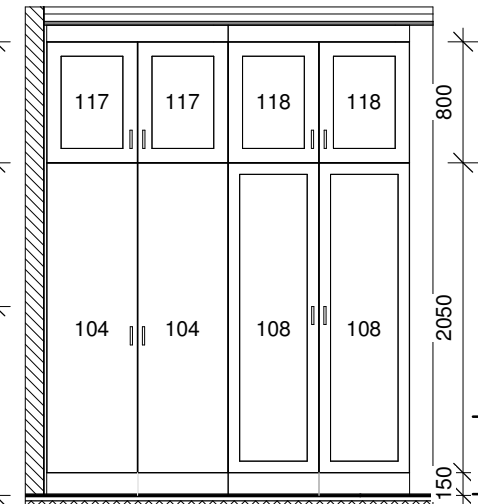
S04 - B
1 : 50



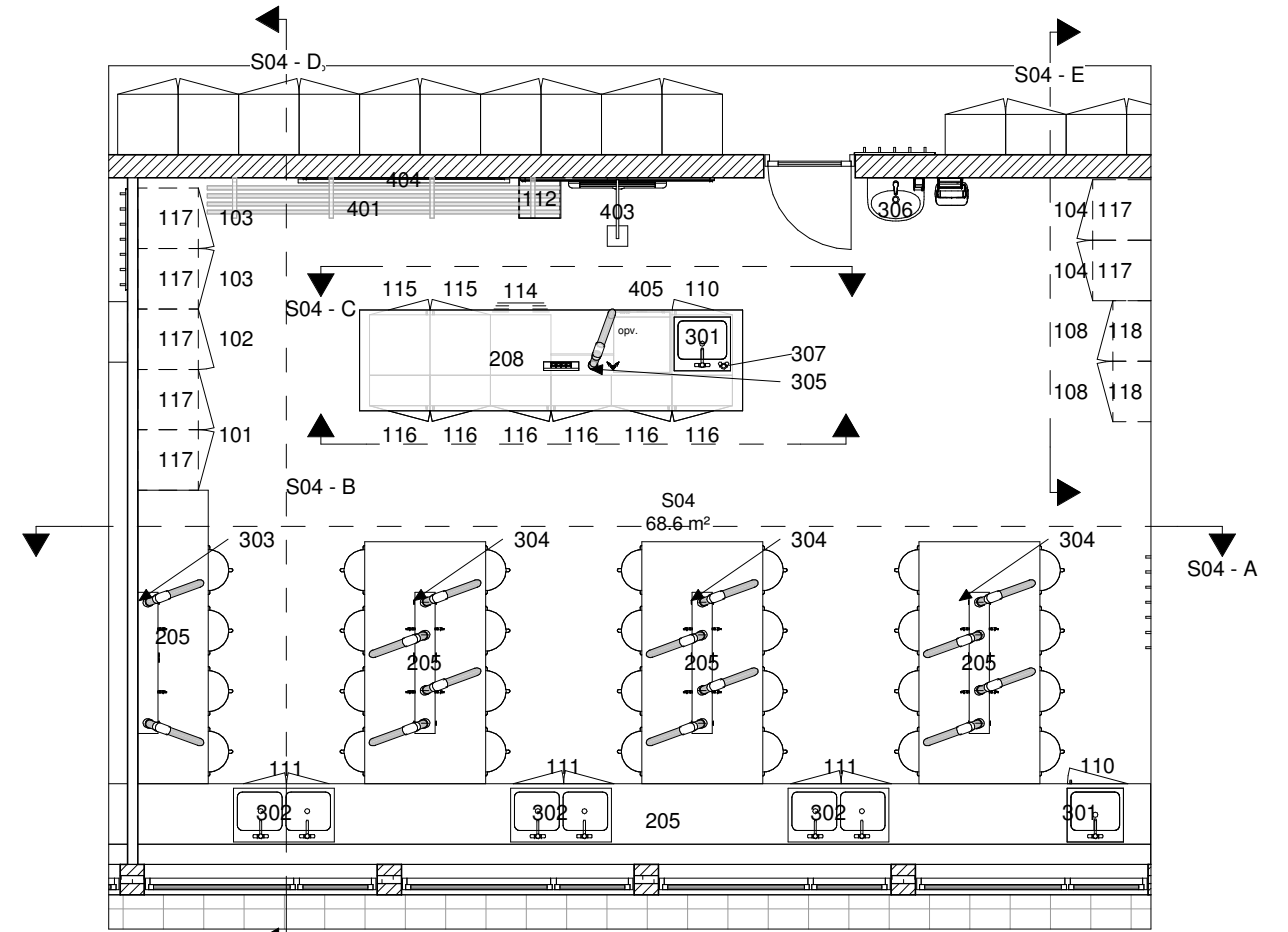
S04 - C
1 : 50



S04 - D
1 : 50



S04 - E
1 : 50



Stuen - S04
1 : 75

Positionsnumre henviser til inventarliste for gældende projekt.

Rev.

30021 - Tibberupskolen, faglokaler

| | | | | |
|---------|-----------------------|----------|--|--|
| Emne | Rumtegning S04 | | Tegn. nr. | A-02-04-04 |
| Fase | Udbudsprojekt | Bygherre | Helsingør Kommune Center for Økonomi og Ejendomme Sct. Anna Gade 5 A 3000 Helsingør | Mål Udsendt Revideret |
| Tegner | MDO | Arkitekt | LeanDesign Aps Sophie Brahes Gade 1A 3000 Helsingør | Adresse Matrikelnr. Ejerlav |
| Kontrol | JWR | Ingeniør | LeanDesign Aps Sophie Brahes Gade 1A 3000 Helsingør | Idrætsvej 19, 3060 Espergårde 26ee Mørdrup by, Mørdrup |